



# ARROWHEAD AERIAL PRODUCTS, INC.

4940 Lightning Drive, Suite 6  
Hermantown, MN 55811-1447

877-525-2164 Toll Free

218-525-2164 Office

218-525-5162 Fax



# AAP Custom Products

- AAP Low Pressure Tool Hoses and Impact Combination Set Page 3
- AAP Outrigger Pads and Aerial Products Page 4
- AAP Torque Wrench Extensions Page 5
- Accessory Products Page 6
- AAP Contact Information and Line Sheet Page 7

Arrowhead Aerial Products is pleased to announce that we have increased our tool product lines to serve you better. Arrowhead is now a dealer for Greenlee Utilities, offering the complete line of Fairmont & Greenlee tools. In addition, we are now also a distributor for Cembré tools. This dual dealership allows us to offer several levels of quality and price for battery operated and hydraulic tools.

***Fairmont***

Greenlee has incorporated the time honored extensive Fairmont product line into the Greenlee Utility brand. The full product offering can be found in their on-line catalog at [www.greenleeutility.com](http://www.greenleeutility.com).



For the complete line of professional grade Greenlee tools, find their on-line catalog at [www.greenlee.com](http://www.greenlee.com).



For the extensive line of Cembré mechanical, hydraulic and battery operated tools, go to their website [www.cembre.com](http://www.cembre.com).

## Impact Combination Set



**Assembled in House:**

**Tool Hose Sets: 8', 10', 12' or custom.**

**Tool Hose  
Assembly  
and  
Accessories**





# OUTRIGGER PADS



\*HDPE Plastic

\*Wooden

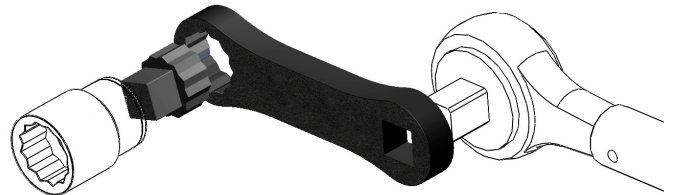
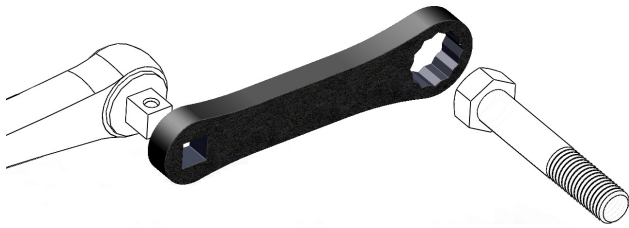
We have different types and sizes to meet your daily needs.



Plastic pegs inserted to keep your outriggers from sliding off the pad.



# Torque Wrench Extensions



**3" 1/2 Drive 15/16 Hex**

**5" 1/2 Drive 15/16 Hex**

**8" 1/2 Drive 15/16 Hex**

**Adapter 15/16 12Pt - 1/2 Drive**



**3" 3/4 Drive 1-1/8 Hex**

**5" 3/4 Drive 1-1/8 Hex**

**8" 3/4 Drive 1-1/8 Hex**

**Adapter 1-1/8 12Pt - 3/4 Drive**

All types of parts for your aerial lift needs.



MODEL #: 5A30

Call or e-mail us.



## **ARROWHEAD AERIAL PRODUCTS, INC.**

4940 Lightning Drive, Suite 6, Duluth, MN 55811-1447  
877-525-5164 Toll Free 218-525-5164 Office 218-525-5162 Fax

---

**Sharon McCarty, Gary Werkhoven or Greg Webb**

**Sharon's Mobile: 218/341-2357**

**E-mail: [info@arrowheadaerial.com](mailto:info@arrowheadaerial.com)**

**We specialize in aerial lift parts, buckets, accessories,  
and tools for all uses.**

**Call or e-mail us for pricing.**

**Cembré and Greenlee-Fairmont Tool Distributor**

**Assembled in House: Tool Hose Sets: 8', 10', 12' or custom.**

**Out Rigger Pads: HDPE Plastic or Wood**

**Bucket Covers: Regular sizes and custom (Plain or foam filled).**

Aeroquip	Alcoa	Alliance Equipment	*Altec
*Asplundh	Barksdale	Bashlin	Braden
Buckingham	Cembre	Char-Lynn	Cimco
Chelsea	Chicago Pneumatic	CPI	Danfoss
DP Winches	Dukes	*Dur-A-Lift	*Elliott
Estex	*ETI	Fairmont	FCI Burndy
Golight	Greenlee	Hannay Reels	Hastings
*Hi-Ranger	HK Porter	*Holan	Holmbury
Hubbell Power Sys	Huskie	Kearney	*Lift-All
Little Mule/Coffing	Lug-All	Mico	*MTI
*National Crane	*NorStar	Parker	PCC
Pengo	PTI	Puget	Racine
*Reach-All	Rotek	Sho-Me	Snap-Tite
Stanley	*Stelco	Tanaka	*Teco
*Telelect	*Telesta	*Terex	Texoma
Tulsa Power	Tulsa Winch	*Versalift	Vickers Pumps
Waterman	Weatherhead	Winsmith	*UEC

\*AAP has no sponsorship or affiliation with these companies.

**Are you having trouble finding parts?  
Just give us a call and let us research them for you.**

***Our business is customer service***